

# AIR QUALITY HERO STORY COMPETITION



**Keywords:**  
Air Pollution,  
Cars, Anti Idling  
Hero, Clean Air  
Smoke, Gas  
Engine

**Story Ideas:**  
Examples

**Air Quality Hero Character  
Drawing**

**Setting (Places in your  
story)**

Will the story be set in your local  
area? In a park? At school? Maybe  
even in an imaginary land?

**Beginning:**

Lets expand your original idea and introduce the main character/s, introduce the setting and time of day. Maybe your character is a a bird who's a super hero who lives in the local park...



### The problem/conflict:

Here a problem might have happened, maybe our super hero lost their powers or someone had been running their engine in the park causing nasty smoke...

### Turning point/realisation

This could be where your super hero finds their powers or has an idea of how to solve their problem. Do not forget to get creative!



### The Resolution/ rescue

Here you can use your super hero's new powers or ideas to bring a solution to your problem or conflict idea. Think about what could be meaningful to this solution around protecting the earth and our health.

### The End

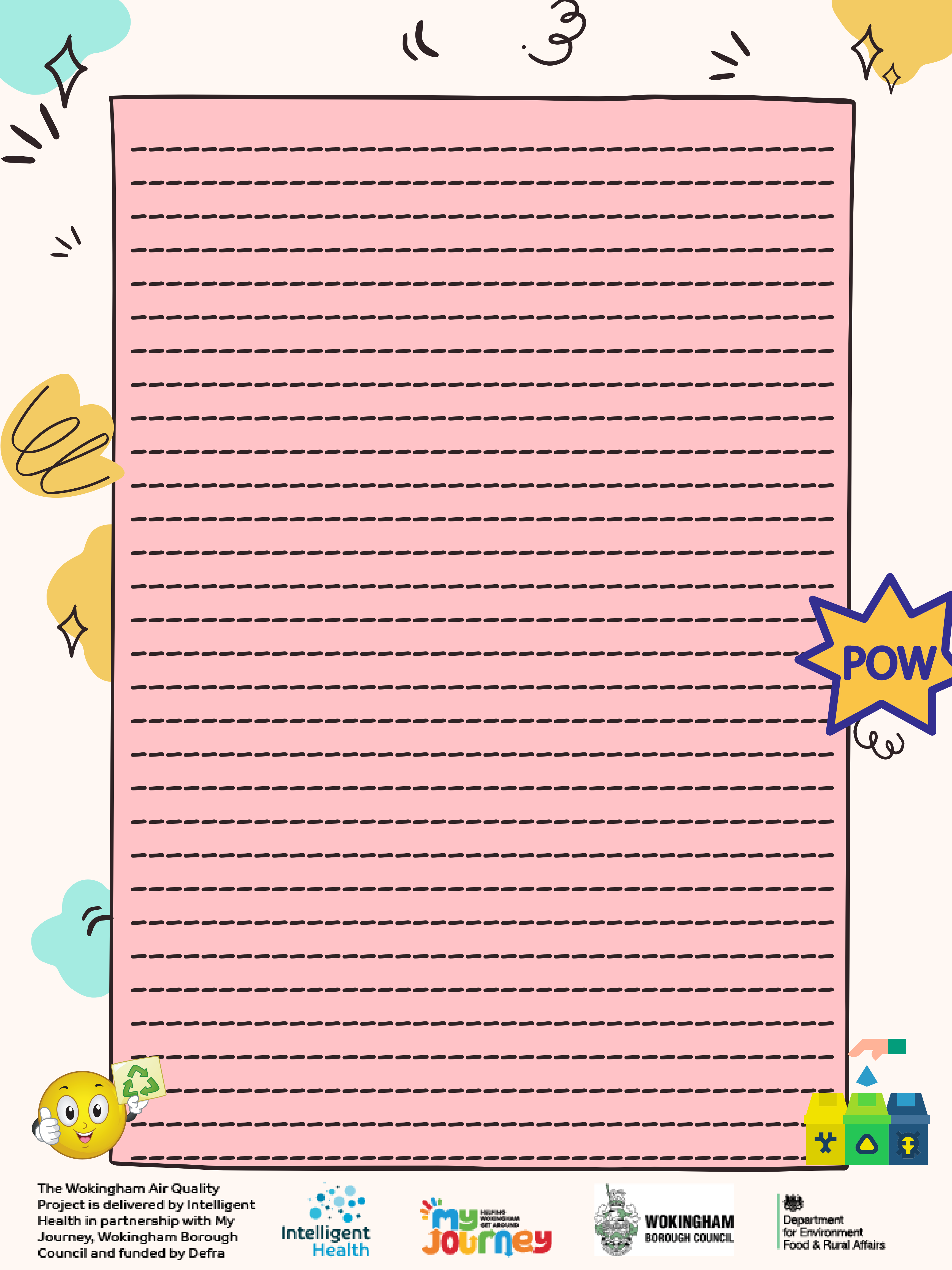
You can now write what happens when the problem is solved in your story. Did the super hero achieve something? Was there a lesson to be learnt?



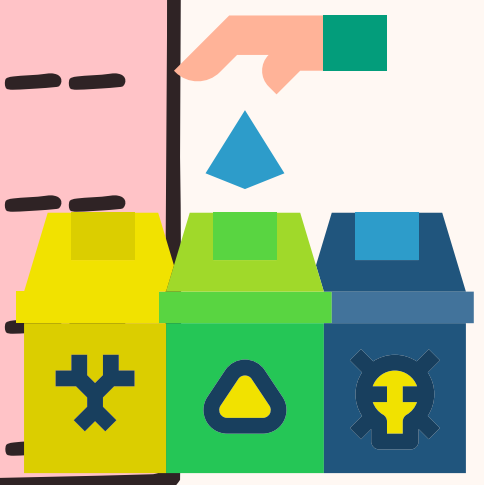
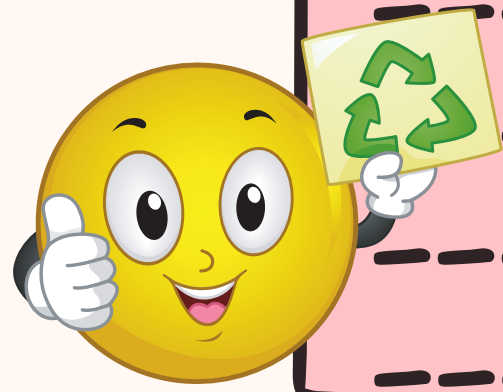
Now we have everything set out, lets start writing!

Handwriting practice area with ten horizontal dashed lines on a pink background.



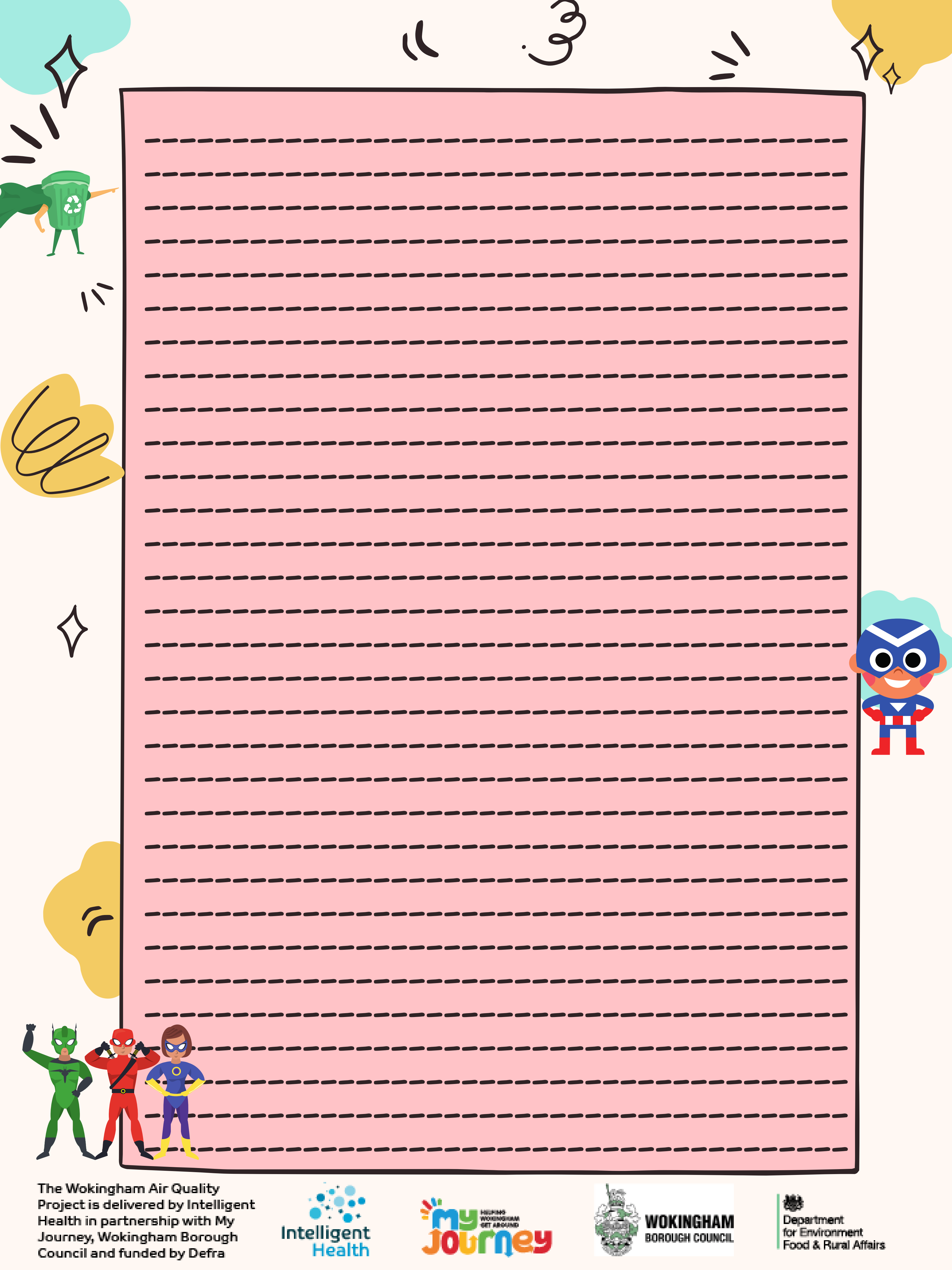


A large rectangular area with a pink-to-white gradient background, containing 25 horizontal dashed lines for writing.



The Wokingham Air Quality Project is delivered by Intelligent Health in partnership with My Journey, Wokingham Borough Council and funded by Defra





The Wokingham Air Quality Project is delivered by Intelligent Health in partnership with My Journey, Wokingham Borough Council and funded by Defra





A large pink rectangular area with ten horizontal dashed lines for writing.

## Air Quality Hero Character Drawing

